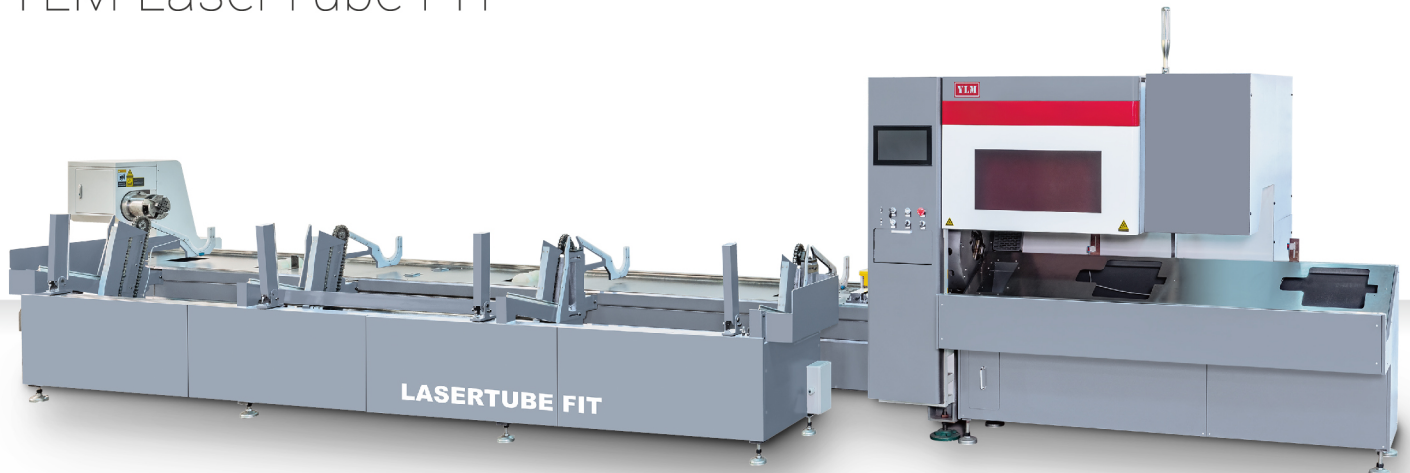


LASER TUBE

CUTTING MACHINE

雷射管切機

YLM LaserTube FIT



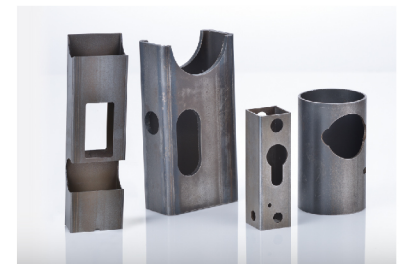
Features of Machine

- Range of tube wall thickness varies with the laser power.
- Designed for high speed cutting of various tube shapes.
- Equipped with an intelligent digital controller featuring humanized control, which is easy to learn and operate.
- The specially designed software allows the operator to design the desired graphs on characters with ease, then machining can be conducted immediately.
- The machine is driven by servomotors, providing fast and smooth motions and high positioning accuracy. This combines with the high precision orienting transmission mechanism to ensure high cutting accuracy.
- The entire machine structure is highly rigid to achieve maximum stability during machining.

機器特性

- 切割管壁厚度範圍，依雷射功率而定。
- 適用各種管型之快速切割。
- 搭載智能化數位控制器，具人性化操控特色。易學、易操作。
- 特殊軟體設計，使操作者可輕易設計所需圖形或文字，再進行加工。
- 本機採用伺服馬達驅動，動作快速順暢，定位精準。配合精密導向傳動機構，確保切割之高精度。
- 整機結構高剛性，加工穩定性高。

Machining Examples 加工實例



LASER TUBE CUTTING MACHINE 雷射管切機

- Applicable industries: Automotive/motorcycle. Bicycle, leisure products, machine manufacturing, aerospace, furniture, and steel structure manufacturing, etc.
- 適用行業: 汽/機車業、自行車業、休閒業、機械製造業、航太業、傢俱業、鋼構製造業...等。

Intelligent Laser Tube Cutting Machine
High precision. High Speed. Multi-function.

智能化雷射切管機
精密、高速、多功能

Machine Specifications 規格表

型號	MODEL	UNIT 單位	YLM LaserTube FIT	
機台尺寸	Machine Dimensions	L x W x H (mm)	10,000 x 3,300 x 2,000	
機台重量	Machine Weight	kg	4,500	
加工管徑範圍	Tube O.D.	mm	Ø20 ~ Ø152.4 (side min. 20 mm ~ max. diagonal 152.4 mm) (或外接圓不超過Ø152.4的其他管型)	
適用管型	Applicable Tube Types		Round / Square / Rectangular / Oval 圓管 / 方管 / 矩形 / 橢圓	
最大加工管長	Max. Tube Length	mm	6,500	
最短餘料管長	Min. Residual Material	mm	150	
最大成品管長	Max. Products Length	mm	3,000	
各軸行程	Axes travels	X	mm	6,500
		Y	mm	160
		Z	mm	120
		A	°	360
各軸速度	Axes Feed Rate	X	m/min	20
		Y	m/min	20
		Z	m/min	20
		A	°/s	570
雷射功率	Laser Power	W	1,000 / 2,000	
適用材料	Applicable Materials		Carbon steel / Stainless steel / Aluminum / Brass / Copper and other metal material (different power due to different thickness) 碳鋼 / 不銹鋼 / 鋁 / 黃銅 / 銅等金屬材料 (厚度與功率有關)	
總功率	Total Power	Kw	20	

■ The mentioned specifications & dimensions are subject to change without notice.
有關機台規格與尺寸保留變動權力，不另通知。

Peripheral Equipment

Standard

- Water Chiller
- Laser generator
- Laser cutting head
- Blower

Option

- Air dryer
(tropical climate required)
- Dust collector

週邊配件

標準

- 恆溫冷卻水機
- 雷射源
- 切割頭
- 鼓風機

選配

- 乾燥機 (熱帶氣候必選)
- 集塵器



穎漢科技股份有限公司
YING HAN TECHNOLOGY CO., LTD.

No.50, Keji 1st Rd., Annan Dist., Tainan City 709, Taiwan
70955台南市安南區科技一路50號
Tel: +886-6-3843188 Fax: +886-6-3843205
E-mail: sales@ylm.com.tw www.ylm.com.tw

